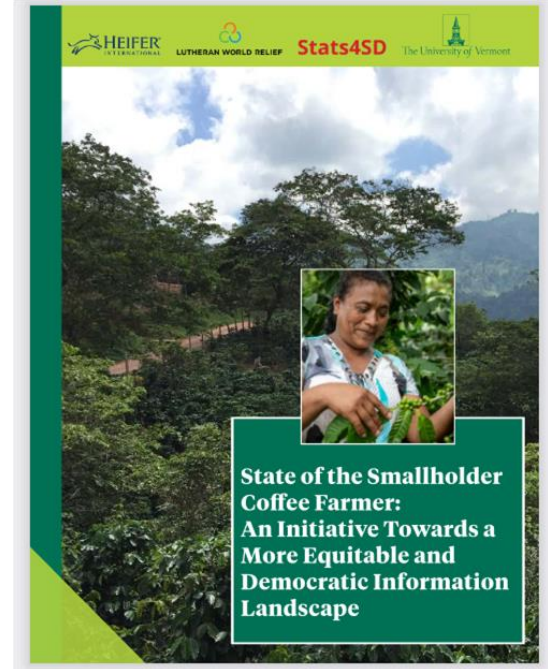


State of the Smallholder Farmer report: findings from the data and the process

Janica Anderzén and Ernesto Méndez,
Agroecology and Livelihoods Collaborative (ALC)

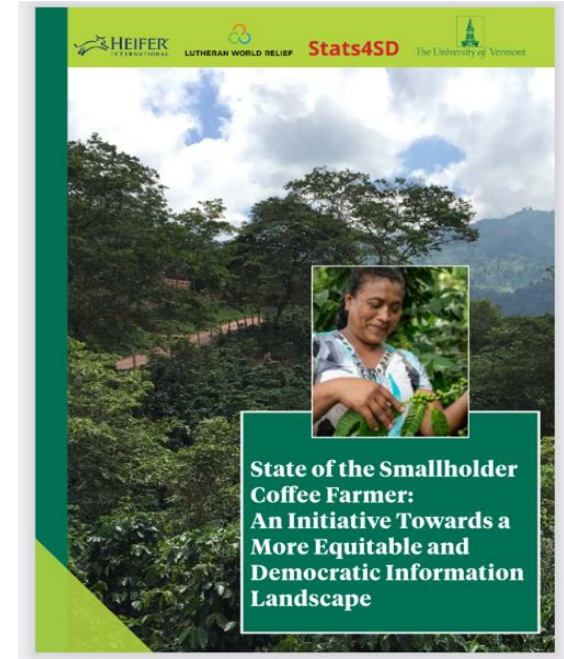
October 20, 2021



The University of Vermont

What is the report and why is it important?

- An example of what can be done with data from the platform.
- An analysis of selected socioeconomic and environmental indicators from the platform.
- A review and discussion of relevant information to contextualize the analysis.
- Communicate the current reality of information- availability, access, challenges and opportunities.

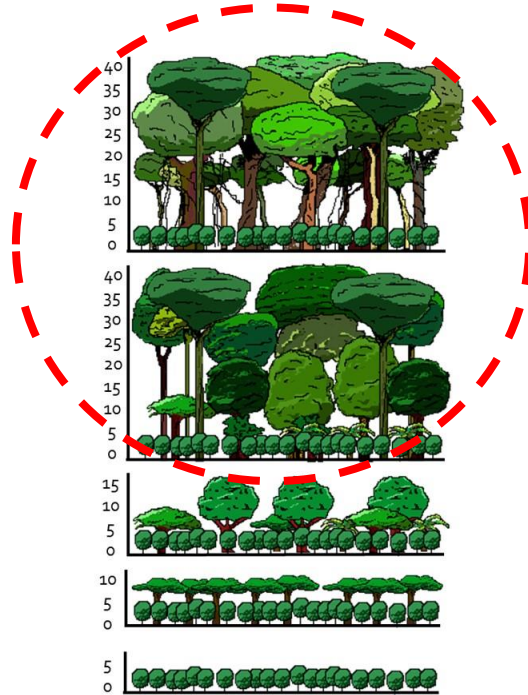




Selected findings from the report

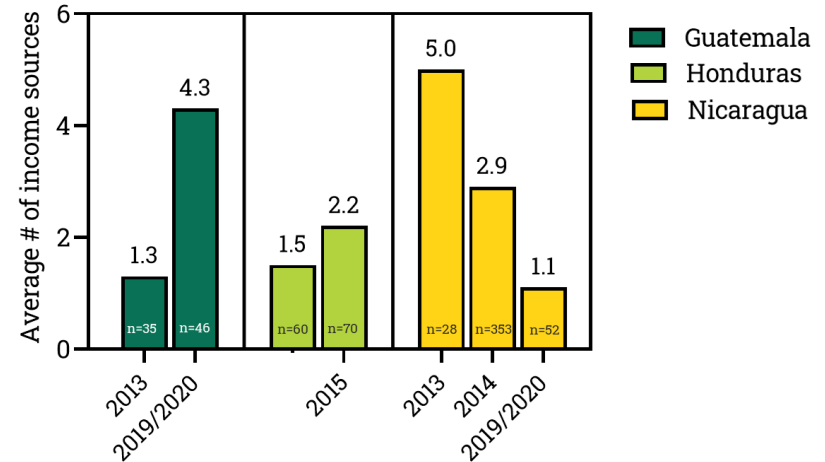
Selected Findings: Agrobiodiversity

- Most smallholder plots are agroforestry systems
- High diversity and density of trees remains a strong indicator of sound environmental management
- Multiple uses: sale, food, medicine, etc.



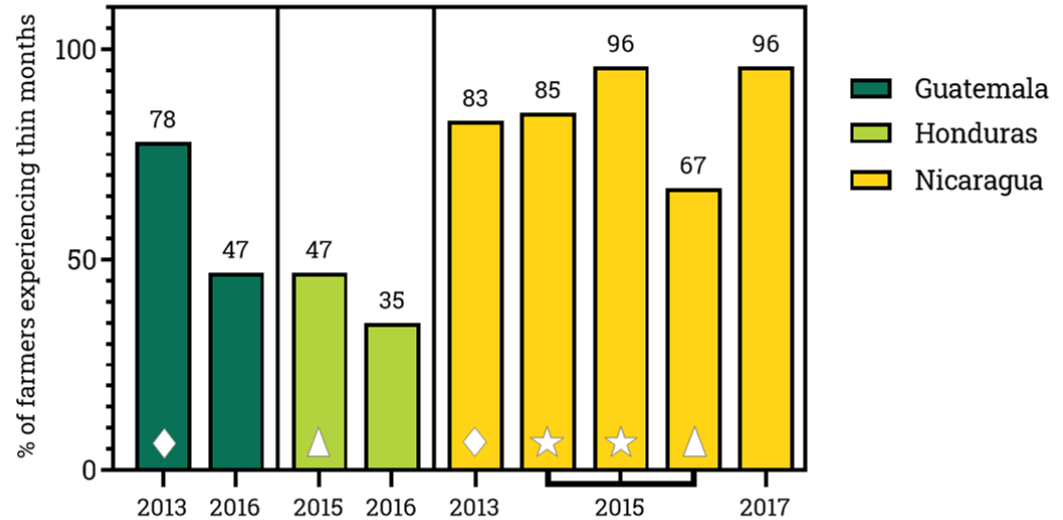
Income diversification

- Income sources ranged from just coffee (1) to up to 5 in Nicaragua
- Income diversification can provide stability against vulnerabilities of coffee and others



Food insecurity

- Seasonal food insecurity a persistent trend in coffee communities
- Climate change and dependency on coffee, among other factors, can exacerbate food insecurity
- On-farm diversification can strengthen food security and sovereignty



Some lessons learned about the data landscape

- **Publicly available data and information are limited.** A lot of the data and information are not made publicly available (for various reasons).
- **Information asymmetries.** What is not being shared?
- **Many barriers to accessing data.** These include language barriers, paywalls (e.g., many academic publications), etc.
- **“Same, same, but different”.** There is a lot of variability in the indicators and metrics that are being used.
- **Lack of longitudinal data.** More longitudinal data is required to analyze trends or evaluate change over time – for instance, after a major event such as a price crisis.

“How can those who are contributing data and indicators shape the agenda...How can we come together and use this for the greater good of smallholder coffee producers?”

Concluding remarks

- Analysis of the selected indicators for the 3 countries confirm **the precarious situation that smallholder farmers continue to face.**
- More coordinated efforts are needed around data collection, analysis, etc, especially so that it is **beneficial to smallholder farmers.**
- **Deeper collaborations** among key actors in the coffee value chain, including real participation from farmers, is the way forward to make the information landscape more democratic and equitable



The Way Forward

In order to take this pilot to the next level, **we need to:**

1. Be sure this is useful and valuable to the potential users
2. Secure resources to maintain it
3. Recruit partners and collaborators across the coffee value chain to contribute data
4. Define how best to generate and share periodic 'State of the Smallholder' reports

Please reach out if you are interested in collaborating: coffee@stats4sd.org!!